



NDIS/SDA  
LIFESTYLE  
HOMES

QLD

AVAILABLE  
NOW



8 Leomatteo Crescent  
Kalkie Heights  
Bundaberg QLD



*Kalkie Heights HPS SDA Home + OOA*  
**Modern Accessible Living**

**A newly completed High Physical Support (HPS) SDA home located in the emerging Kalkie Heights community.**

Designed for participants who value independence, privacy, and a quiet suburban lifestyle with support available onsite.

**Accessible Living in Bundaberg's beautiful Coastal Region**

2 Participant Bedrooms + Onsite Overnight Assistance (OOA)

**KEY FEATURES:**

- Two well-scaled participant bedrooms, each with **private ensuite and storage**
- **OOA room positioned for fast response and privacy separation**
- **Step-free circulation** across the entire home, including thresholds and outdoor areas
- **Wide-access kitchen and dining zone**, designed for visibility and safe movement
- **Double garage with internal access** for secure arrival/exit
- **Accessible alfresco area facing a private, fenced backyard**
- **Climate control throughout**, natural light, and durable finishes suitable for daily support needs
- Structural allowances and provisions compliant with **HPS design requirements**



AVAILABLE NOW

## 8 Leomatteo Crescent, Kalkie Heights Bundaberg QLD

<b>Bedrooms (x2)</b>	Private ensuites, wide access, support-ready layouts
<b>OOA Room</b>	Full access, close to circulation zones
<b>Kitchen + Dining</b>	Open-plan, accessible appliances, functional layout
<b>Living Area</b>	Central lounge with easy outdoor access
<b>Outdoor</b>	Covered alfresco + generous grassed yard
<b>Entry / Parking</b>	Double garage + level entry pathways

### WHO THIS HOME SUITS

- Participants funded for **High Physical Support (HPS)**
- Suitable pathways for **FA, IL, or SIL** depending on package and supports
- Individuals seeking low-occupancy, high-privacy living with optional support on site
- Support Coordinators managing transitions from shared settings into smaller, personalised housing

### LOCAL AMENITY SNAPSHOT

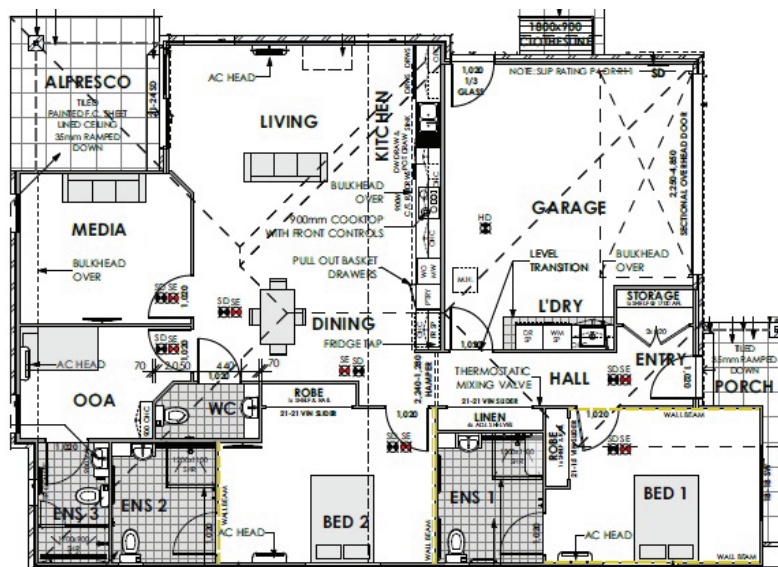
- Minutes to **Bundaberg Base Hospital and Friendlies Private Hospital**
- Close to schools, allied health, and local supermarket precincts
- Short drive to **Bargara's beaches and recreation paths**
- Quiet residential pocket with modern streetscape and new infrastructure

✱ A calm residential setting, modern design, and intentionally low-density layout provide space, dignity, and flexibility — helping participants live confidently and comfortably while staying connected to essential services and the coastline.

### Now open for enquiries

Secure your place in this purpose-built SDA home.

### FLOORPLAN



### CONTACT

**Min Dixon**  
DIRECTOR

Tel: 0406 886 101  
Email: [min@ndis-sda.com](mailto:min@ndis-sda.com)

