



NDIS/SDA
LIFESTYLE
HOMES

QLD

AVAILABLE
NOW



16 John Street
Redbank QLD



SDA High Physical Support
in Redbank – Ipswich/Brisbane Region

Enjoy a brand-new, purpose-built HPS property, with high-level support in a peaceful cul-de-sac setting. This purpose-designed NDIS SDA Home (High Physical Support) combines accessibility, comfort and lifestyle in one thoughtfully planned space.

HOME HIGHLIGHTS

- **Two Ensuite Participant Bedrooms** – each with private bathroom, wide access and functional layout for autonomy and dignity
- **Dedicated OOA Room with Ensuite** – on-site overnight support available when needed
- **Step-Free Access Throughout** – seamless movement from entry through every room, kitchen and alfresco
- **Accessible Kitchen** – designed for ease of use with accessible appliances and thoughtful storage
- **Large Backyard & Outdoor Alfresco** – landscaped yard and covered alfresco area for relaxation and fresh air
- **Double Garage** – secure, accessible vehicle access and internal entry
- **Included Appliances** – fridge, microwave, washer and dryer provided for added convenience



AVAILABLE NOW

16 John Street
Redbank QLD

SMART, SAFE DESIGN FEATURES

- Wide corridors for effortless mobility and maneuverability
- Accessible fixtures, switches, and fittings throughout
- Purpose-built for high-support needs, constructed by experienced **SDA builders** with a focus on safety, comfort and quality finishes



AVAILABLE NOW

16 John Street
Redbank QLD

LOCATION HIGHLIGHTS – REDBANK SDA LIVING

Located in a quiet cul-de-sac in the well-connected suburb of Redbank, this home offers excellent access to shopping, transport and health services:

- Peaceful cul-de-sac location for privacy and minimal traffic flow
- **Redbank Plaza** just 5 minutes away with supermarkets, pharmacies, medical centres and everyday essentials
- **Redbank Train Station** only 3 minutes away with direct connections to Ipswich and Brisbane CBD
- **Redbank Medical Centre (GP)** approximately 1.5 km away for convenient local health care
- **Ipswich Hospital** approximately 12 km away offering comprehensive public health and emergency services



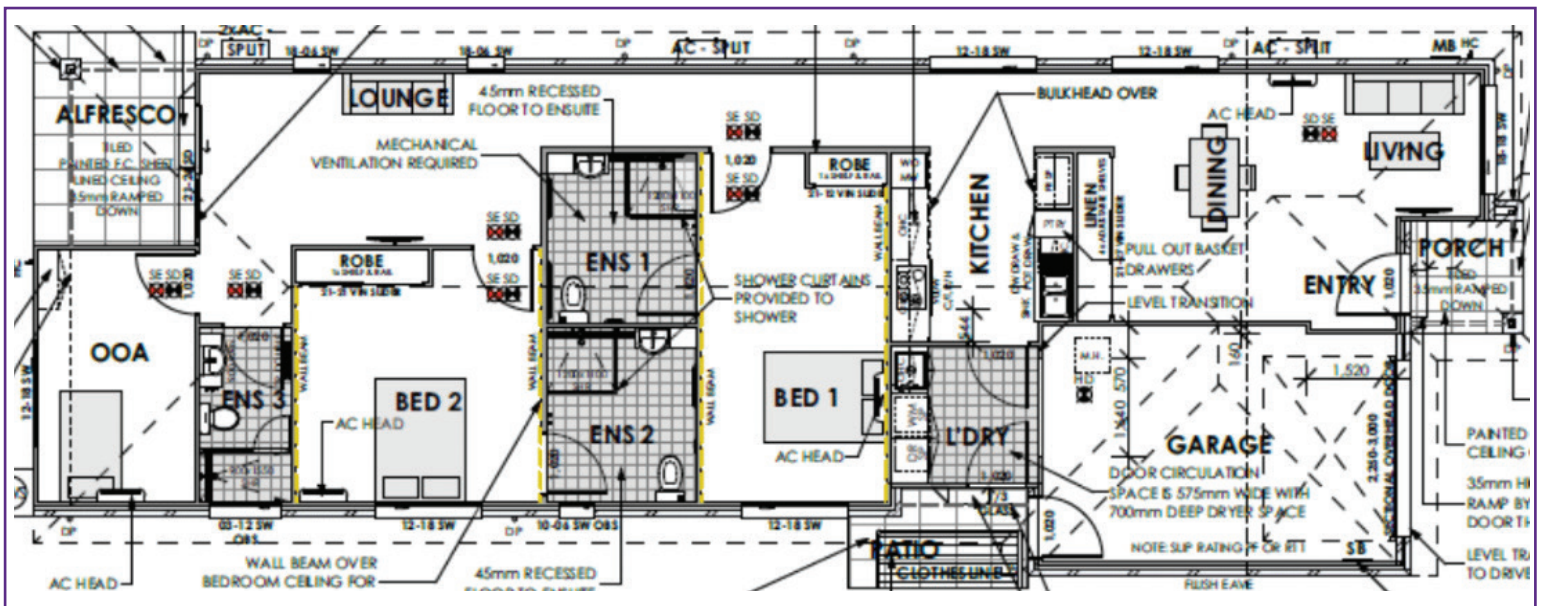
A Home That Supports Your Independence

Be the first to make this brand-new, accessible SDA home your own. Experience the ideal balance of style, independence and high-support amenities in a welcoming community setting.

Vacancies now open

Express your interest today to secure your place in this exceptional new SDA home in Redbank.

FLOORPLAN



CONTACT

Min Dixon

DIRECTOR

Tel: 0406 886 101

Email: min@ndis-sda.com

