



NDIS/SDA  
LIFESTYLE  
HOMES

QLD

AVAILABLE  
NOW



Unit 4, 46  
Calton Terrace  
Gympie QLD

1



## *Newly available modern* **1-Participant Bedroom SDA Apartment in Gympie**

This centrally located **1-bedroom SDA apartment** offers the perfect combination of comfort, accessibility, and independence. Purpose-built to the **Improved Liveability** design category, this home features thoughtful design elements for participants with sensory, cognitive, or intellectual impairments.

Located in the heart of Gympie, you'll enjoy convenient access to shopping centres, healthcare services, transport, and community facilities—all while living in a low-maintenance, private apartment environment.



### KEY FEATURES:

- **Improved Liveability design** – enhanced luminance contrast, clear accessways, and sensory-friendly features
- Spacious bedroom with accessible ensuite
- Open-plan kitchen and living space
- Slip-resistant flooring throughout
- Modern kitchen with accessible benchtops and appliances
- Climate-controlled with air conditioning
- Safe and secure single-level layout
- Private patio/courtyard for outdoor relaxation
- Onsite parking available
- Low-occupancy living with peace and privacy



**AVAILABLE NOW**

**Unit 4, 46 Calton Terrace**  
Gympie QLD

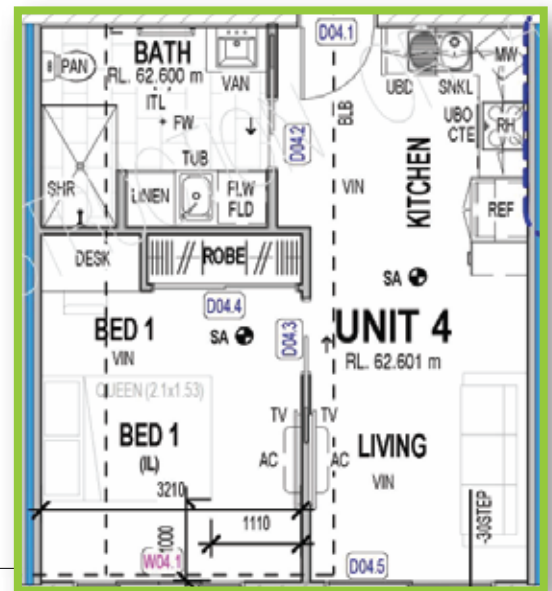
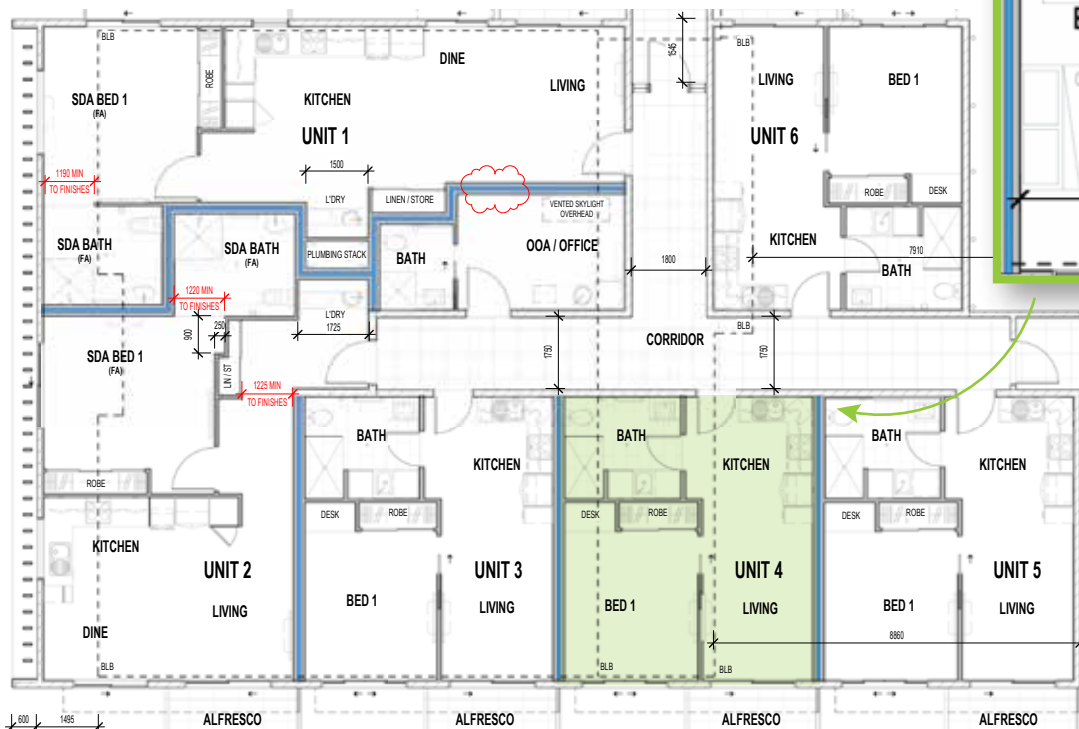
**LOCATION HIGHLIGHTS:**

- Close to Gympie CBD, medical centres, shops, and public transport
- Quiet and secure complex setting
- Designed and delivered by experienced SDA providers
- This home is ideal for NDIS participants looking to live independently while having access to the support and features they need for daily living.

**Vacancy available now**

Enquire today to secure this rare 1-bedroom SDA opportunity in Gympie.

**FLOORPLAN**



**CONTACT**

**Min Dixon**

**DIRECTOR**

Tel: 0406 886 101

Email: [min@ndis-sda.com](mailto:min@ndis-sda.com)

