



NDIS/SDA
LIFESTYLE
HOMES

QLD

AVAILABLE
NOW



Unit 4, 46
Calton Terrace
Gympie QLD

1



Newly available modern **1-Participant Bedroom SDA Apartment in Gympie**

This centrally located **1-bedroom SDA apartment** offers the perfect combination of comfort, accessibility, and independence. Purpose-built to the **Improved Liveability** design category, this home features thoughtful design elements for participants with sensory, cognitive, or intellectual impairments.

Located in the heart of Gympie, you'll enjoy convenient access to shopping centres, healthcare services, transport, and community facilities—all while living in a low-maintenance, private apartment environment.



KEY FEATURES:

- **Improved Liveability design** – enhanced luminance contrast, clear accessways, and sensory-friendly features
- Spacious bedroom with accessible ensuite
- Open-plan kitchen and living space
- Slip-resistant flooring throughout
- Modern kitchen with accessible benchtops and appliances
- Climate-controlled with air conditioning
- Safe and secure single-level layout
- Private patio/courtyard for outdoor relaxation
- Onsite parking available
- Low-occupancy living with peace and privacy



AVAILABLE NOW

Unit 4, 46 Calton Terrace
Gympie QLD

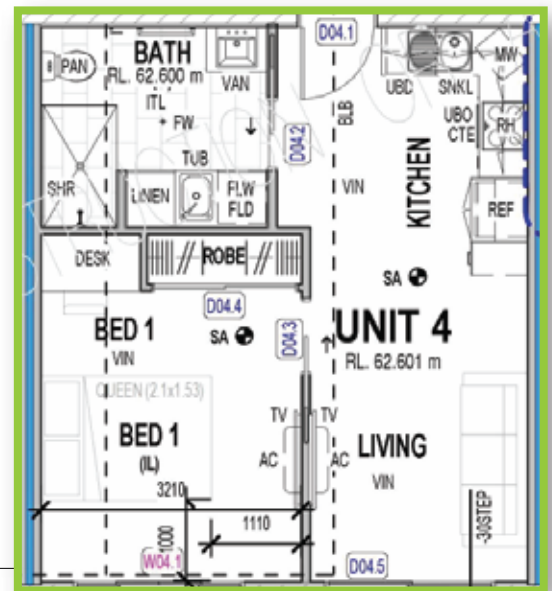
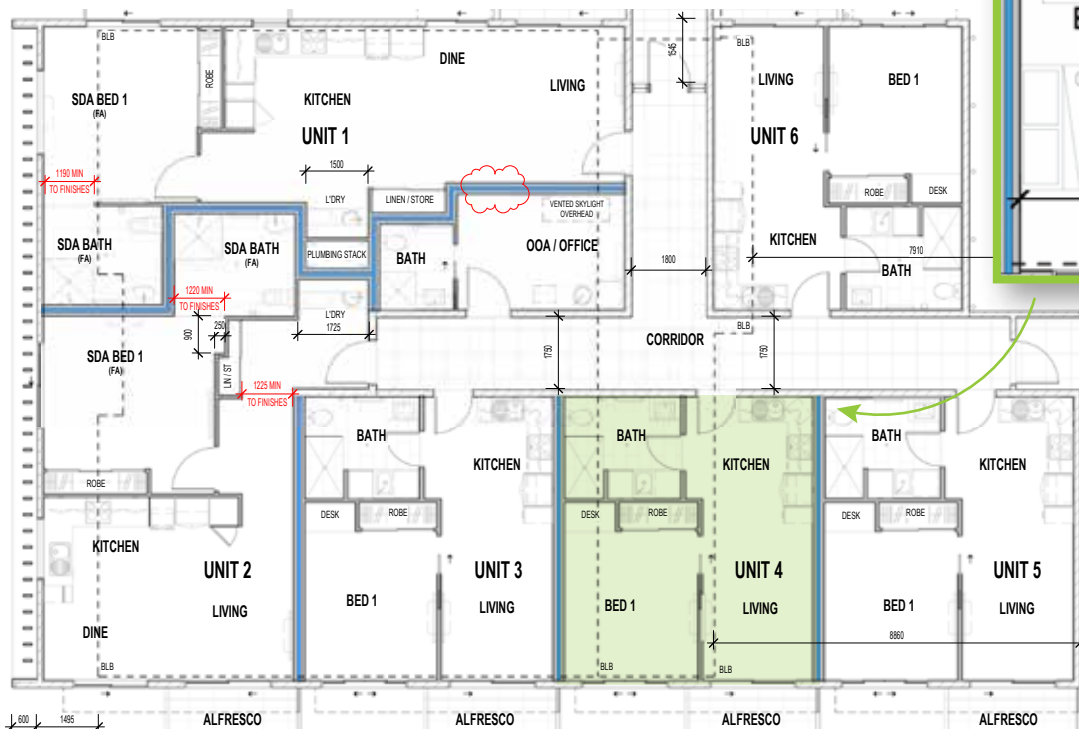
LOCATION HIGHLIGHTS:

- Close to Gympie CBD, medical centres, shops, and public transport
- Quiet and secure complex setting
- Designed and delivered by experienced SDA providers
- This home is ideal for NDIS participants looking to live independently while having access to the support and features they need for daily living.

Vacancy available now

Enquire today to secure this rare 1-bedroom SDA opportunity in Gympie.

FLOORPLAN



CONTACT

Min Dixon

DIRECTOR

Tel: 0406 886 101

Email: min@ndis-sda.com

