



NDIS/SDA  
LIFESTYLE  
HOMES

QLD

AVAILABLE  
NOW



**43 Dominique Way**  
Flinders View QLDt



*Brand New High Physical Support*  
**SDA Home in Flinders View**

Welcome to modern, purpose-built SDA living in a quiet pocket of Flinders View. This brand-new **High Physical Support home at 43 Dominique Way, Flinders View QLD** is designed to deliver independence, comfort, and peace of mind, with 24/7 support available in a low-occupancy setting.



**QUICK HIGHLIGHTS:**

- **2 HPS Participant Bedrooms + Dedicated OOA Room** – each with private ensuite for dignity and privacy
- **Fully Accessible Layout** – wide doorways, step-free pathways, and compliant circulation spaces
- **Modern Kitchen & Open-Plan Living** – stone benchtops, quality appliances, and light-filled spaces
- **Safe, Compliant Bathrooms** – reinforced walls, step-free showers, and assistive tech ready
- **Climate Control Throughout** – air-conditioning and ceiling fans for year-round comfort
- **Ceiling Hoist Provisions & Smart Tech Ready** – future-proof accessibility
- **Secure Garage with Step-Free Access** – convenience and safety built in
- **Covered Outdoor Patio & Landscaped Yard** – perfect for relaxation or entertaining
- **Built to NDIS SDA Design Standards** – High Physical Support

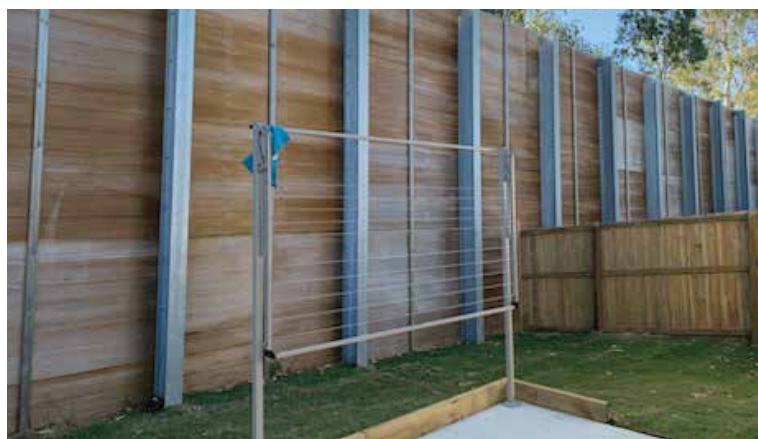


**AVAILABLE NOW**

**43 Dominique Way**  
Flinders View QLD

**AREA/LOCATION HIGHLIGHTS:**

- Located in Flinders View – a peaceful and growing Ipswich suburb
- 7 min drive to Ipswich Hospital and medical specialists
- 5 min drive to Winston Glades Shopping Centre – groceries, pharmacy, dining
- 10 min to Ipswich CBD – retail, services, entertainment
- Local parks, schools, and community facilities nearby
- Easy access to Cunningham Highway for travel to Brisbane or surrounding regions



**AVAILABLE NOW**

**43 Dominique Way**  
Flinders View QLD



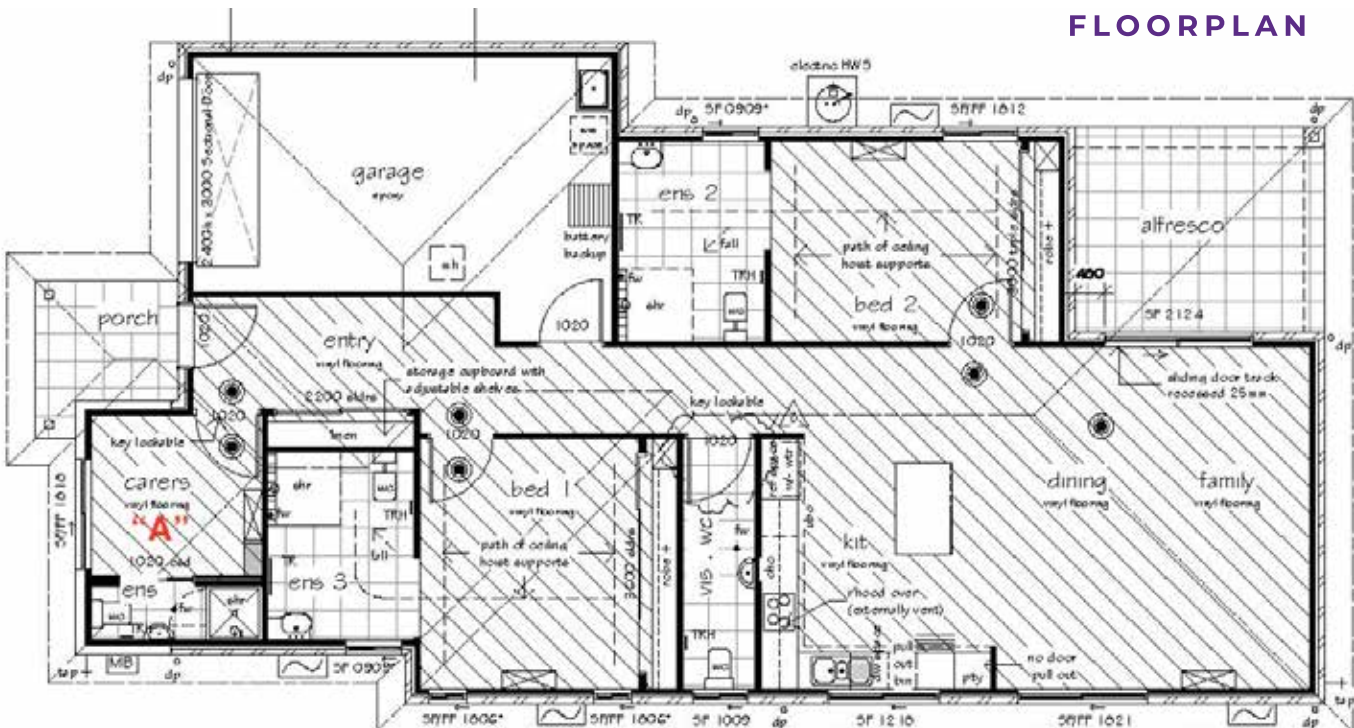
**IDEAL FOR:**

- NDIS participants approved for High Physical Support (HPS) funding
- Individuals seeking modern, low-occupancy living with 24/7 support options
- Families and support coordinators looking for high-quality, participant-focused SDA housing

**Now accepting applications**

Register your interest today to secure this exceptional HPS SDA home in Flinders View!

**FLOORPLAN**



**CONTACT**

**Min Dixon**  
DIRECTOR

Tel: 0406 886 101  
Email: [min@ndis-sda.com](mailto:min@ndis-sda.com)

