



**18 Moon Court**  
Lawnton QLD



*Coming Soon*  
**High Physical Support SDA Home**

## High Physical Support 2 Participant Bedrooms + Onsite Overnight Assistance (OOA)

Positioned in the quiet and accessible **Koala Vista Estate**, this purpose-built **SDA home** in Lawnton is designed to support participants with High Physical Support needs. With wide doorways, step-free access, and thoughtful assistive technology infrastructure, this home provides a safe, private, and dignified living environment—perfect for participants seeking greater independence with 24/7 support.

Built to full **NDIS SDA Design Standard (Edition 1.1)** specifications, this home combines comfort, quality, and future-proof design in a peaceful suburban setting.

### KEY FEATURES:

- 2x SDA participant bedrooms designed for ease of mobility and personalisation
- 1x OOA room with private access to support onsite care staff
- Extra-wide 1020mm doors and accessible pathways throughout
- Step-free transitions, compliant ramps, and slip-resistant flooring
- 5x split system air conditioners + ceiling fans in all bedrooms and living areas
- Designer kitchen with Omega stainless steel appliances and stone benchtops
- Intercom system connecting bedrooms, living space, and entry

# AVAILABLE NOW

## 18 Moon Court Lawnton QLD

- Fully accessible alfresco area connected via step-free concrete pathways
- Emergency power backup system (10.8kW) and 7.92kW solar array
- Supplied with quality whitegoods including microwave, fridge, dryer, and washing machine
- Colourbond roof and barrier screens for added safety and ventilation

### LOT & BUILD INFO:

- Land Size: 309 m<sup>2</sup>
- House Size: 194.62 m<sup>2</sup>
- Expected Land Registration: March 2024

### LOCAL AREA HIGHLIGHTS:

- **3 min drive** to Lawnton Train Station – easy access to Brisbane City and surrounds
- **6 min drive** to **Strathpine Centre** – major retail, grocery, dining and cinemas
- **5 min drive** to **Lawnton Medical Centre (GP)** and allied health services
- **10 min drive** to **Redcliffe Hospital** – 24/7 emergency and specialist care
- **Close to parks and green space**, including Bob Bell Park and Pine Rivers Park
- Quiet cul-de-sac living with easy access to main roads and public transport

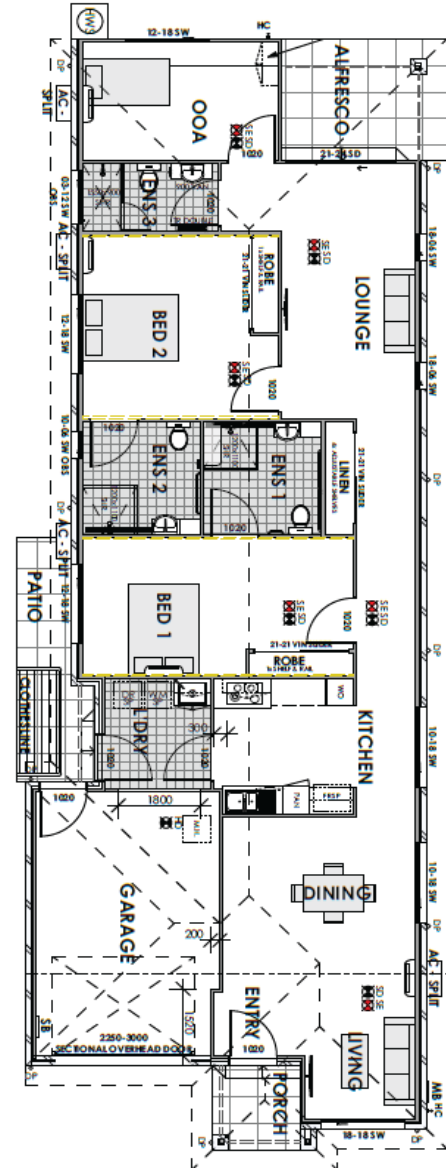
### ✱ Why Choose This Home?

This brand-new home offers a unique blend of privacy and support in a low-density environment. It's ideal for NDIS participants ready to transition to a more independent lifestyle, with everything designed to support comfort, accessibility, and peace of mind.

### Vacancy coming soon

Register your interest today to secure your place in this premium SDA home in Lawnton

### FLOORPLAN



### CONTACT

**Min Dixon**  
DIRECTOR

Tel: 0406 886 101  
Email: [min@ndis-sda.com](mailto:min@ndis-sda.com)

