

VIRGINIA

SOUTH AUSTRALIA



SDA House - High Physical Support

This home is available for participants with High Physical Support, Fully Accessible or Improved Liveability funding. Includes a spacious 2-bedroom house with an Onsite Overnight Assistance room.

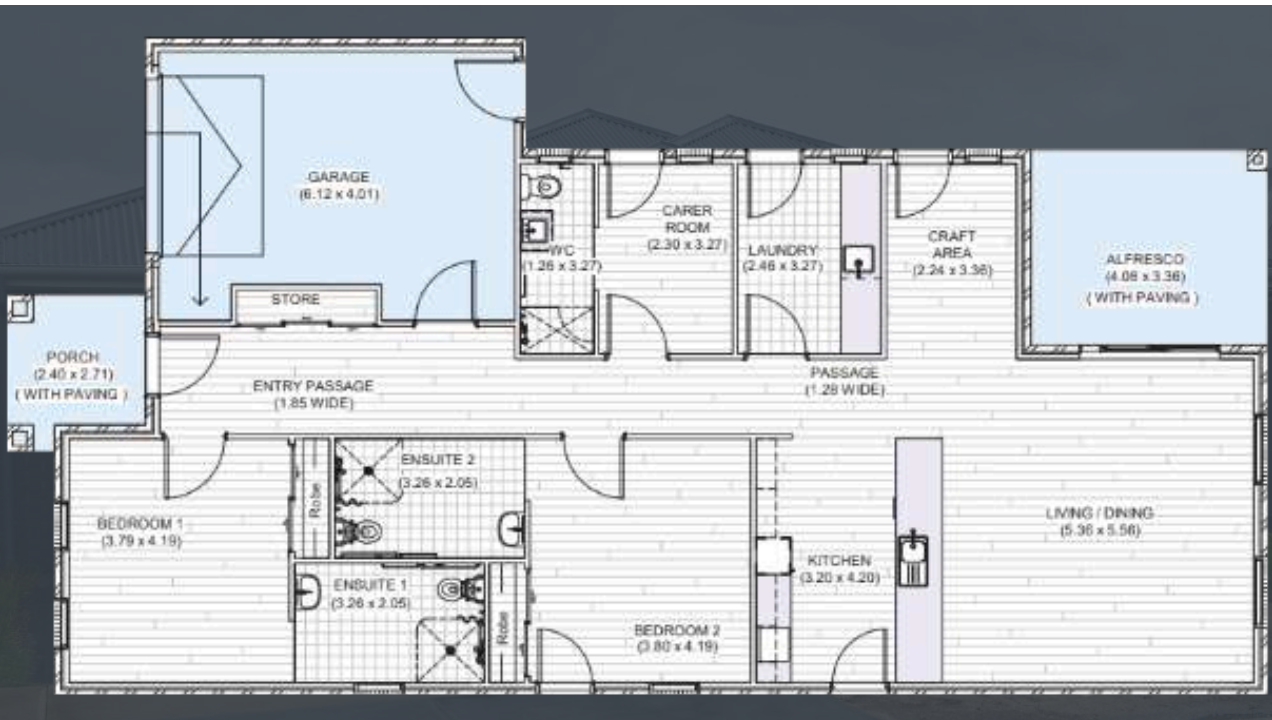
VIRGINIA

SOUTH AUSTRALIA

Virginia, South Australia, is a growing semi-rural township located about 31 kilometres north of Adelaide. Known for its market gardens and horticultural industry, it blends country charm with increasing suburban development. The area boasts a diverse community and local schools. With its mix of farmland and new housing estates, Virginia offers a peaceful lifestyle within reach of the city.

Inclusions:

- Accessible design with wider doorways, spacious hallways, and non-slip flooring
- Shared alfresco area perfect for socialising and unwinding
- Built-in wardrobes in every bedroom for generous storage
- Air conditioning is provided in all bedrooms and the living area
- Backup power system in case of emergency
- Included two fridges for extra food storage
- Kitchen, common areas, and outdoor patio furniture provided



Location - 31 km north of Adelaide's CBD

Airport - 32min drive to Adelaide Airport

Hospital - 21min drive to Lyell McEwin Hospital

Shopping - 5min drive to Virginia Shopping Centre

