

DANDENONG

VICTORIA



SDA Villa - High Physical Support

Two side-by-side duplexes for participants with High Physical Support, Fully Accessible or Improved Liveability funding. These duplexes each have three bedrooms, three bathrooms, and two living spaces. One bedroom dedicated to being the Onsite Overnight Assistance room.

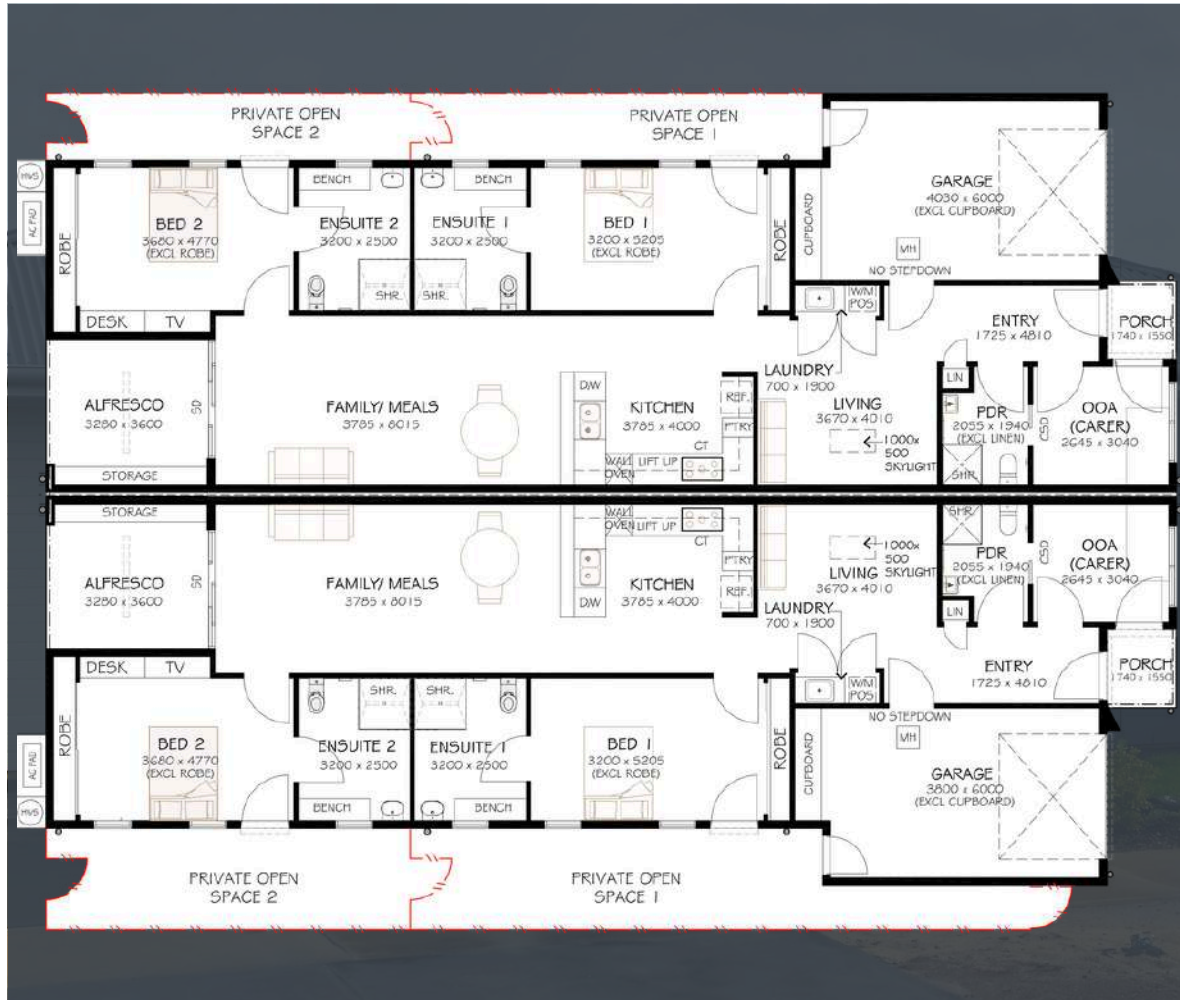
***ESTIMATED COMPLETION NOV 2025**

Image for illustrative
purposes only

DANDENONG

VICTORIA

Dandenong is a vibrant and multicultural suburb located about 29 kilometres southeast of Melbourne's CBD. Known for its bustling markets, diverse cuisine, and strong community spirit, it serves as a key commercial and cultural hub in the southeastern region. The area is well-connected by public transport and continues to grow as a dynamic centre for business and cultural exchange.



Inclusions:

- Two duplex residences located on a single lot
- Spacious bedrooms featuring built-in wardrobes and private outdoor areas attached to each room for added space
- Two separate living rooms, including one with a skylight, ideal for natural lighting and entertaining
- A communal outdoor space with integrated outdoor storage for convenience



Location - 29 km north of Melbourne CBD

Airport - 51min drive to Melbourne Airport

Hospital - 9min drive to Dandenong Hospital

Shopping - 6min drive to Dandenong Market