



SDA HOUSING ASSIST
ONE HOME AT A TIME

WEIR VIEWS

VICTORIA



SDA House - High Physical Support

This home accommodates those with High Physical Support, Improved Liveability, and Fully Accessible funding. Includes a spacious 2-bedroom house with an Onsite Overnight Assistance room with own bathroom.

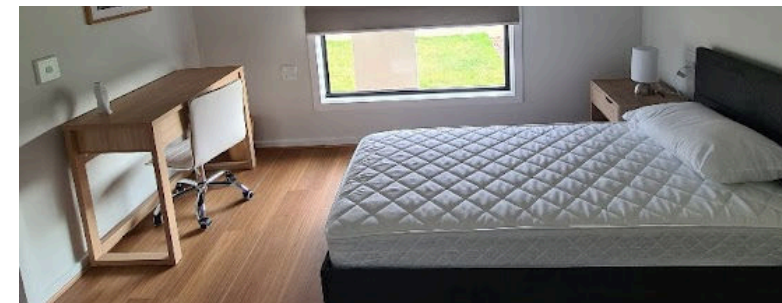
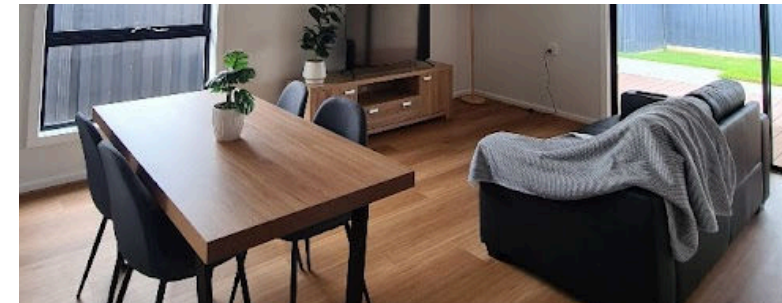
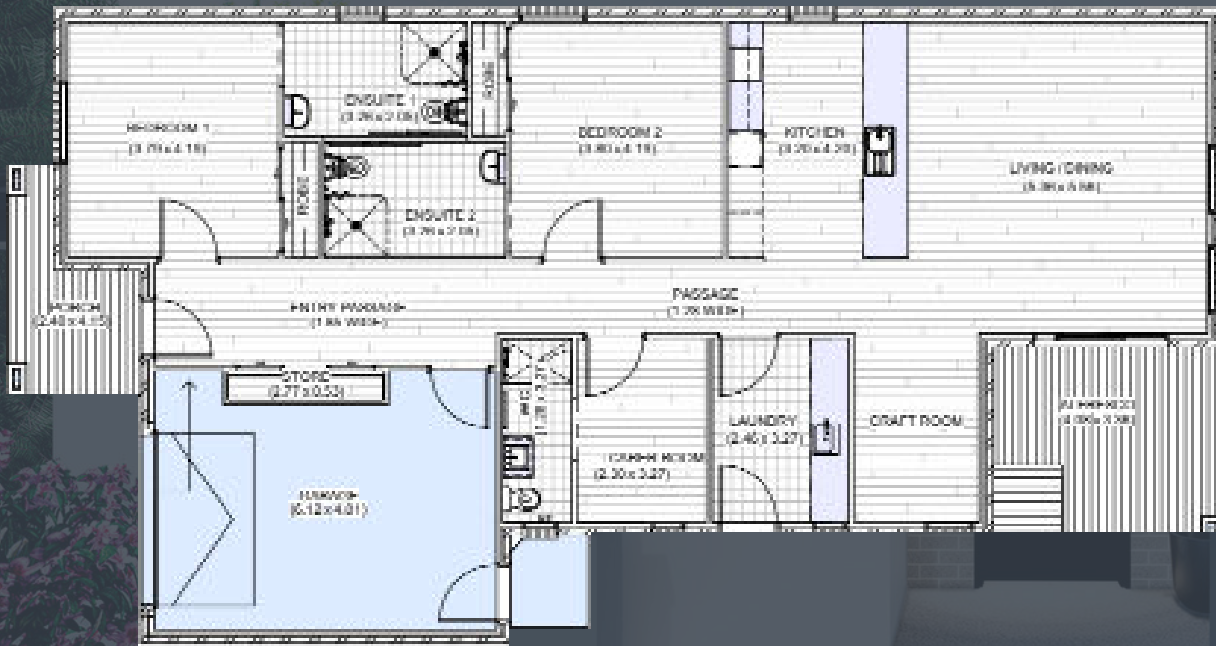
WEIR VIEWS

VICTORIA

Weir Views is a modern, family-friendly suburb known for its tranquil atmosphere and scenic views of the Werribee River. The area offers a blend of affordable housing, convenient amenities like the Opalia Shopping Centre, and easy access to public transport, making it an attractive option for families and young professionals alike.

Inclusions:

- Fully furnished for comfortable living
- Includes washing machine and dryer
- Designed for wheelchair accessibility
- Reverse cycle air conditioning installed
- Emergency power backup solution available
- Secure video intercom system
- Fitted with smoke alarm system



Location - 35kms west of Melbourne's CBD

Airport - 34min drive to Melbourne Airport

Hospital - 32min drive to Werribee Mercy Hospital

Shopping - 3min drive to Opalia Plaza

