



SDA HOUSING ASSIST
ONE HOME AT A TIME

SINAGRA

WESTERN AUSTRALIA



SDA House - High Physical Support

This home accommodates those with High Physical Support, Improved Liveability, or Fully Accessible funding. Includes a spacious 3-bedroom house with an Onsite Overnight Assistance room.



SDA HOUSING ASSIST
ONE HOME AT A TIME

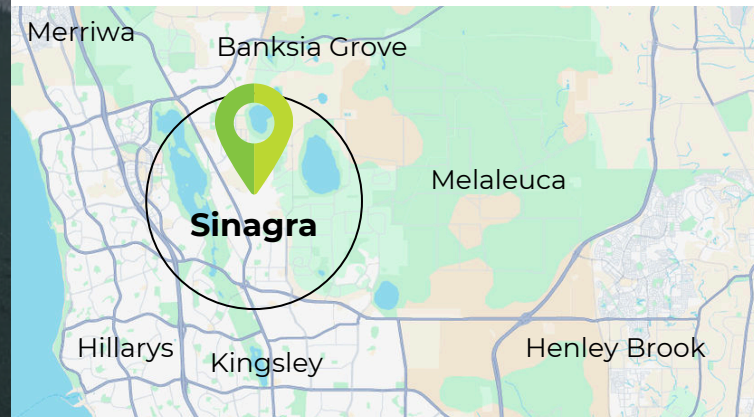
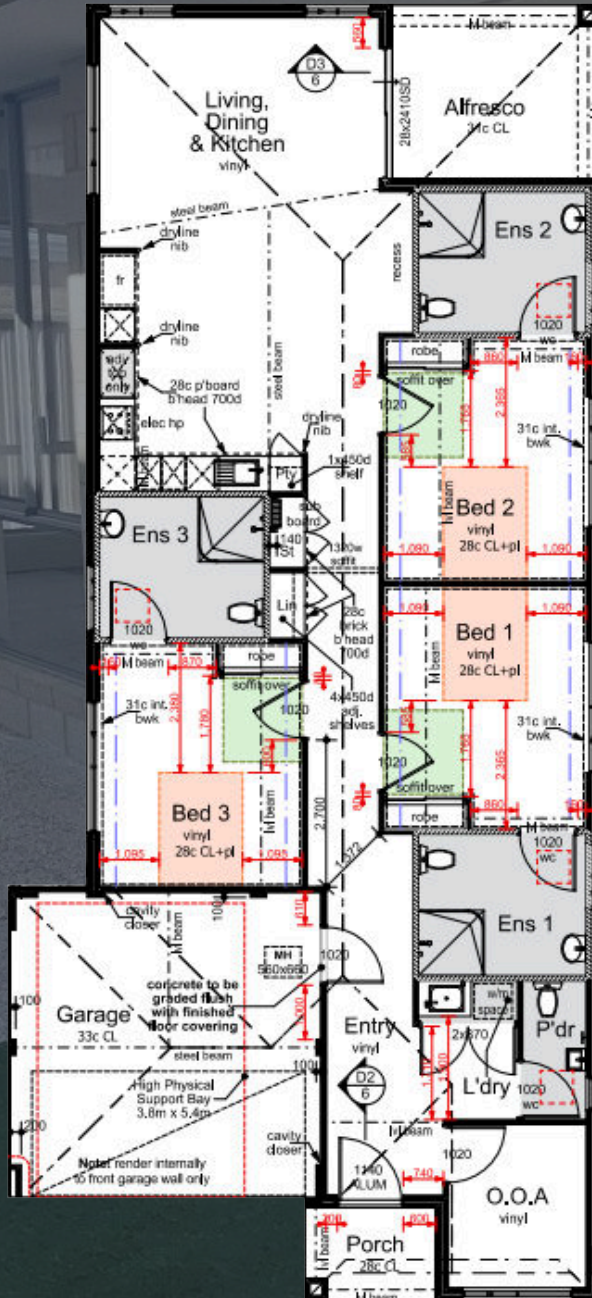
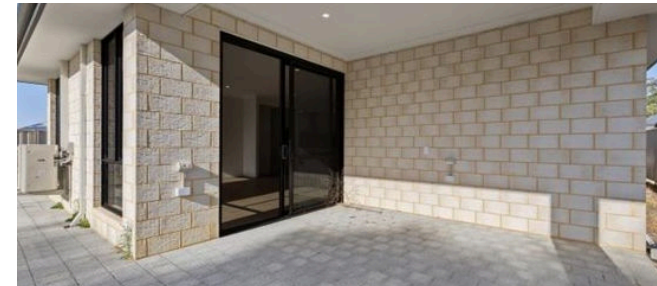
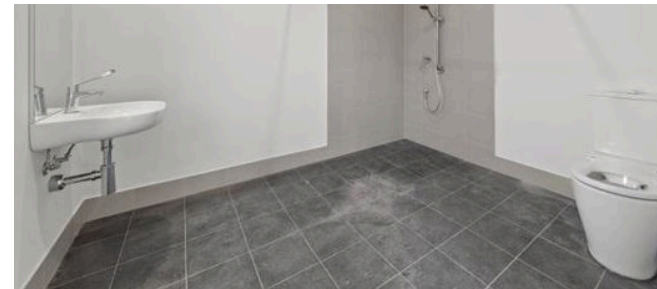
SINAGRA

WESTERN AUSTRALIA

Sinagra, Western Australia, offers a peaceful suburban lifestyle with green spaces and scenic views. It is family-friendly, close to amenities and parks, and provides convenient access to major transport routes for easy commuting to Perth.

Inclusions:

- Backup power system in every bedroom.
- Data points for voice and motion control.
- Daikin split-system air conditioning installed.
- Durable, slip-resistant vinyl flooring throughout.
- Smoke alarms and extra electrical outlets.
- Accessible design with wide doorways and adjustable fixtures.
- Easy-to-use carer call system in all bedrooms.
- Recessed lighting for better visibility and safety.



Location - 25kms north of Perth's CBD

Airport - 40min drive to Perth Airport

Hospital - 10min drive to Joondalup Private Hospital

Shopping - 6min drive to Wanneroo Central

Public Transport - Bus stop 900 meters away