



SDA HOUSING ASSIST
ONE HOME AT A TIME

RUNCORN

QUEENSLAND



SDA House - High Physical Support

This home accommodates those with High Physical Support, Improved Liveability, and Fully Accessible funding. Includes a spacious 3-bedroom house with an Onsite Overnight Assistance room with own bathroom.

Image for illustrative
purposes only

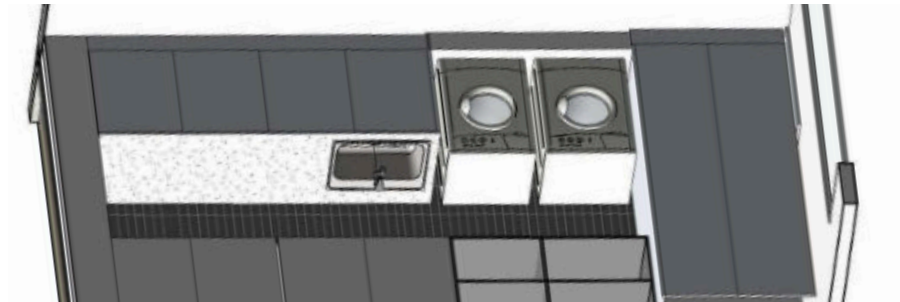
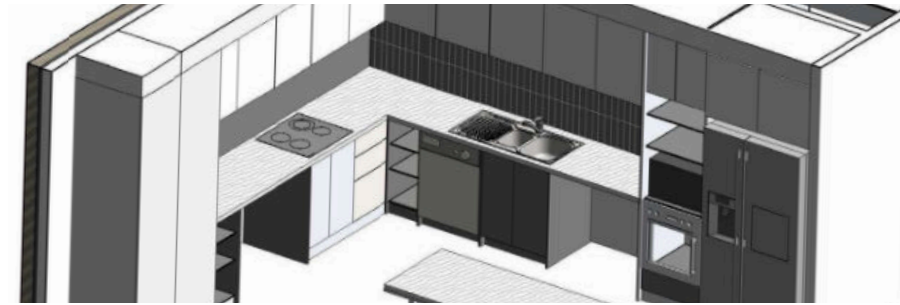
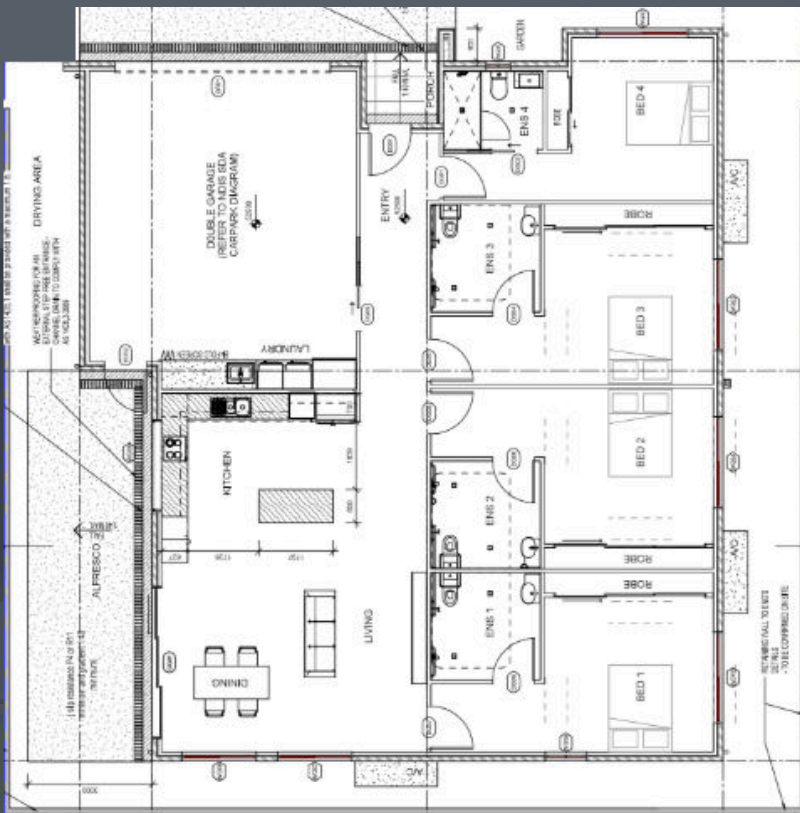
RUNCORN

QUEENSLAND

Runcorn, a diverse suburb in Brisbane's south, balances urban convenience with suburban tranquility. It offers easy access to public transport, quality schools, local shops, and green spaces.

Inclusions:

- Large bedrooms with spacious built-in wardrobes
- Air conditioning throughout for year-round comfort
- Generous shared alfresco area, perfect for outdoor living
- Spacious laundry with abundant storage options
- Functional layout designed for comfort and convenience



Location - 18kms south of Brisbane CBD

Airport - 21min drive to Brisbane Airport

Hospital - 11minutes to Queen Elizabeth II Jubilee Hospital

Shopping - 4minutes to Runcorn Plaza

Public Transport - Bus stop 138m away

