



SDA HOUSING ASSIST
ONE HOME AT A TIME

SOUTH GUILDFORD

WESTERN AUSTRALIA



SDA House - High Physical Support

This home accommodates those with High Physical Support, Improved Liveability, or Fully Accessible funding. Includes a spacious 3-bedroom house with an Onsite Overnight Assistance room.

✉ housing@ndis.property

☎ 1300 259 740

🌐 ndis.property/sda-housing-assist



SDA HOUSING ASSIST
ONE HOME AT A TIME

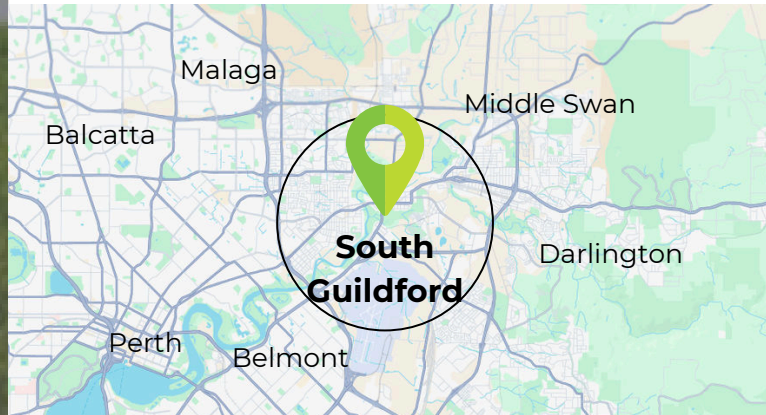
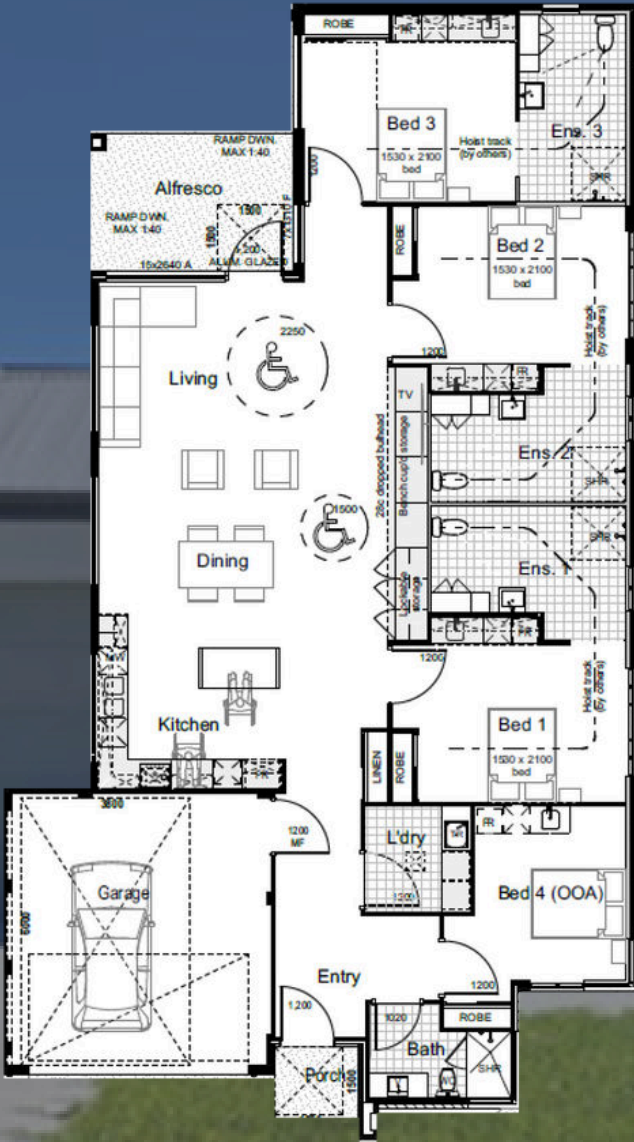
SOUTH GUILDFORD

WESTERN AUSTRALIA

South Guildford is a beautiful, close-knit community surrounded by nature, with parks and the Swan River just moments away. It's an idyllic location that offers a peaceful and welcoming environment for families to thrive. With its charming atmosphere, it's the perfect place to call home.

Inclusions:

- 6-Star Energy Rating – Efficient and sustainable
- Stone Bench Tops – With modern kitchen appliances
- Slip-Resistant Tiles – Wet area safety
- Timber-Look Vinyl – Durable, stylish flooring
- Intercom System – Between rooms and main living
- Emergency Power – Battery back-up for 2 hours



Location - 13kms east of Perth's CBD
Airport - 17min drive to Perth International Airport
Hospital - 12min drive to Swan District Hospital
Shopping - 4min drive to Waterhall Shopping Centre
Public Transport - 400m to bus stop

- Floor Size: 295.12m²
- Land Size: 463m²