



SDA HOUSING ASSIST
ONE HOME AT A TIME

DANDENONG

VICTORIA



+4 Carers Room

- **SDA Apartment - High Physical Support**

This home is suitable for participants with High Physical Support, Improved Liveability and Fully Accessible funding.



SDA HOUSING ASSIST
ONE HOME AT A TIME

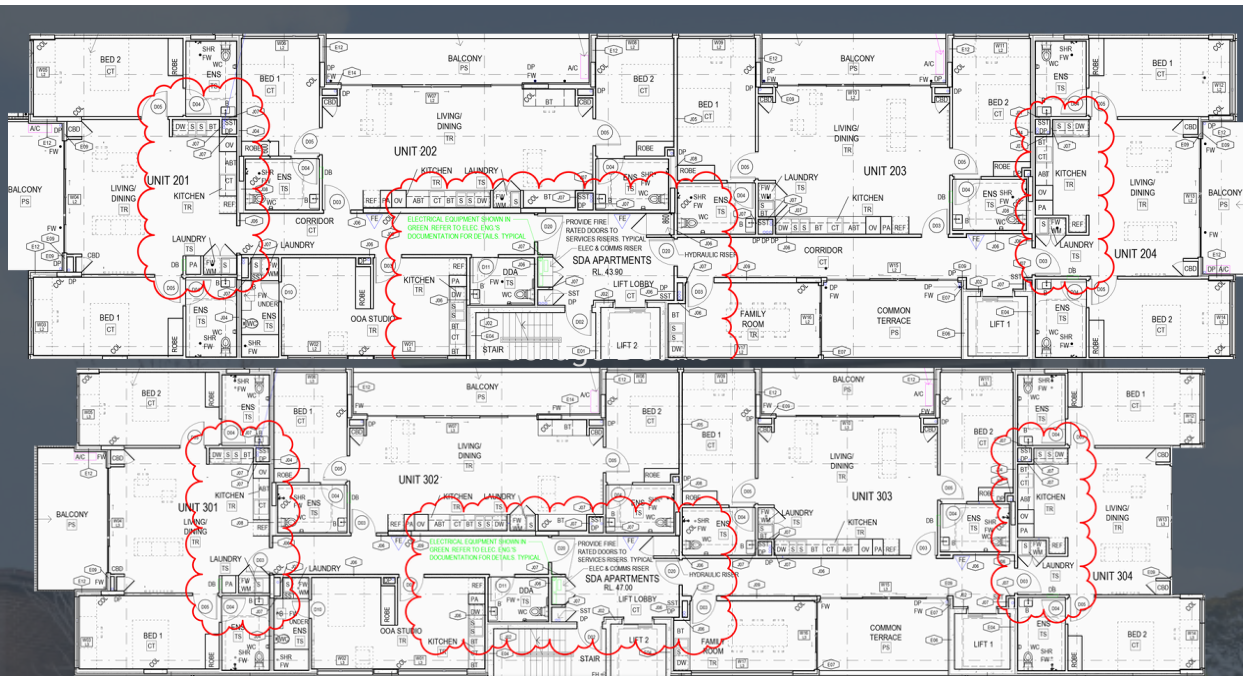
DANDENONG, VICTORIA

LEVEL 2 & 3 - Each Floor has 4 x 2 Bed SDA Apartments + 1 OOA

This facility includes 4 x 2-Bed SDA Apartments and 1 x OOA Room, where Equal Living operates a concierge service to provide personalized support and coordination for residents.

Key Features:

- 4 x 2-Bed SDA Apartments: Accessible, comfortable living spaces designed for residents' needs.
- 1 x OOA Room: Equal Living runs concierge services from this room, offering personalized support and coordination.
- Concierge Service: Provides ongoing assistance and tailored care to enhance resident well-being.



- **Location** - 35 km southeast of Melbourne's Central Business District
- **Airport** - 49min drive to Melbourne Airport
- **Hospitals** - 4min drive to the Dandenong Hospital
- **Shopping** - 1min drive to Dandenong Plaza

