



SDA HOUSING ASSIST
ONE HOME AT A TIME

WYREEMA

QUEENSLAND



- **SDA Home - High Physical Support**
This home is suitable for participants with High Physical Support, Improved Liveability and Fully Accessible funding.



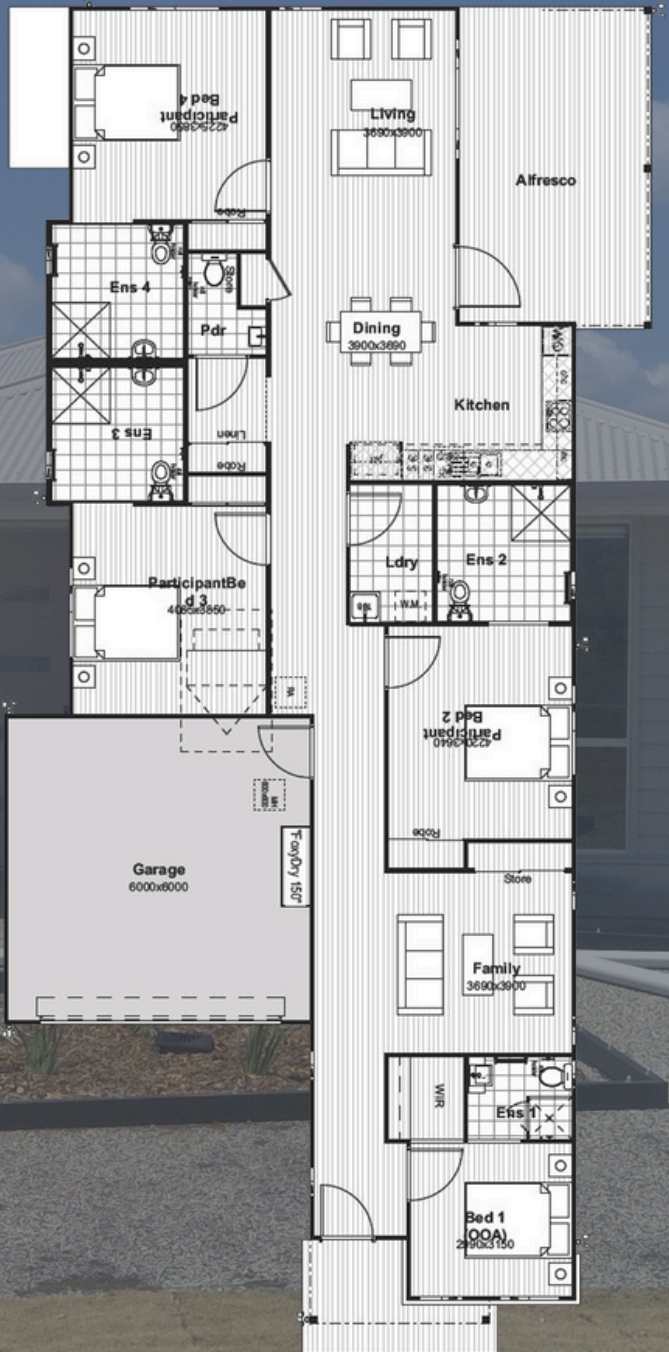
SDA HOUSING ASSIST
ONE HOME AT A TIME

WYREEMA, QUEENSLAND

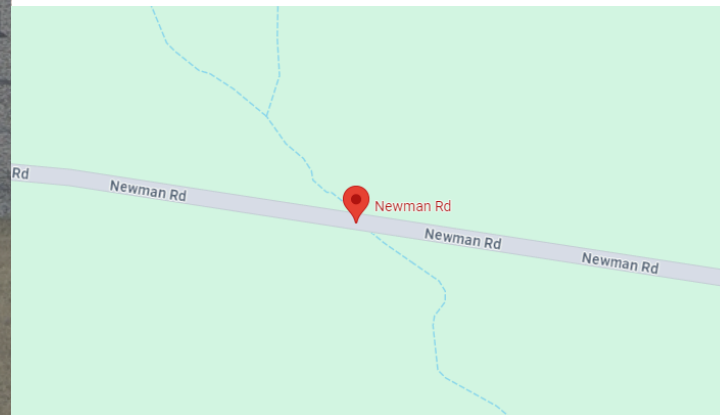
Newman Road in Wyreema provides a peaceful rural setting with a close-knit community and easy access to Toowoomba. Residents enjoy a relaxed lifestyle amidst farmlands, with city amenities nearby.

Inclusions:

- Carpet and tiles throughout
- Ducted air conditioning
- Stone benchtop to kitchen, ensuite and bathroom
- Quality stainless steel appliances
- Flyscreens throughout
- Blinds throughout
- Outdoor patio area
- Turfed and landscaped
- Fully fenced
- Clothesline and letter box
- Preselected external and internal colours



- House Area: 256m²
- Land Size: 948m²



- **Location** - 17kms south of Toowoomba CBD
- **Airport** - 25min drive to Newman Road, Wyreema, Queensland
- **Hospitals** - 17min drive to Toowoomba Hospital
- **Shopping** - 20min drive to Grand Central Shopping Centre